

## Diffusers



### 3 cone or 4 cone Diffusers

| DF3/DF4 or ADF3/ADF4  
Steel or aluminum, core removable.  
User-friendly locking mechanism.  
Integrated earthquake tabs.  
DA3/DA4, ADA3/ADA4 adjustable.  
DF31/DF41, ADF31/ADF41 (R6 OPTION) insulated back.  
DF3D/DF4D, ADF3D/ADF4D 2" collar, single-box.

### Square Plaque Diffusers

| ISO  
Commercial diffuser.  
ISO1 insulated back.  
ISOD 2" collar, single-box.



### Adjustable Plaque Diffusers

| ISA  
Ideal for cooling applications.  
Adjustable from face.

### Universal Valve Diffusers

| DRV  
Supply or return application.  
Sturdy steel construction.



### Round Diffusers

| DCG  
Adjustable.  
Surface or open ceiling.



## Louvered Face Directional

| DLA  
DLA square neck.  
DLAM round neck.  
DLAI (R6 OPTION) insulated back.  
DLA-HI square neck, high induction.  
DLAM-HI round neck, high induction.  
DLAI-HI (R6 OPTION) insulated back.



### Equalizing Grid

| NEG OR -EG OPTION (round)  
| NES OR -ES OPTION (square)  
Equalizes air flow through diffusers.



### Architectural Plaque

| -PQ OPTION  
Ideal for cooling applications.  
Lateral air diffusion.



### Face Extensions

| -X & -Y OPTION  
T-Bar application.  
Steel (-X) or Aluminum (-Y).

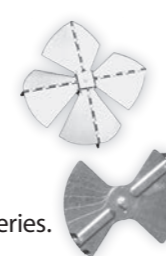
## Perforated Face Diffusers

| PST square neck.  
PSTL square neck, directional baffles.  
PSM metal back, round neck & baffle.  
PSML metal back, round neck, directional baffles.  
PSI (R6 OPTION) molded fiberglass.  
PSIL (R6 OPTION) molded fiberglass & louvers.



## Accessories

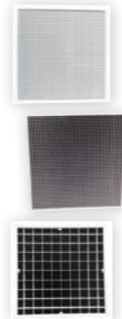
| PF plaster frame.  
| N4 radial opposed blade damper.  
| N5 radial sliding blade damper.  
| N9 square OBD for DLA Series.  
| NBD pie shape baffle (black).  
| NBI exclusive magnetic baffle for ISO Series.  
| NTSR square-to-round transition.



## Ceiling Returns

### Egg Crate

All T-bar mount, except ERE.  
| ERT, ERU & ERN  
| ERT5, ERU5 & ERN5, 1/2" x 1/2" x 1/2", 45°  
Prevents line of sight inside the grille.  
| ERT3, ERU3 & ERN3, 1/2" x 1/2" x 1"  
Wider & deeper Egg Crate.  
| ERT1, ERU1 & ERN1, 1" x 1" x 1"  
Deeper Egg Crate.



| ERN aluminum Egg Crate core.  
| ERN-P plastic Egg Crate core.  
| ERE for surface mount.  
| ERU 1" frame, square neck.  
| ERU narrow frame, square neck.  
| ERTF square neck, filter support.



| ERM round neck.  
| ERMF round neck, filter support.  
| ERI (R6 OPTION) insulated back.  
| ERIF (R6 OPTION) insulated, filter support.



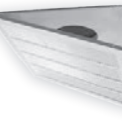
### Perforated Face

All T-bar mount  
| PRN perforated face only.  
| PRT square neck.  
| PRTF square neck, filter support.  
| PRM round neck.  
| PRMF round neck, filter support.  
| PRI (R6 OPTION) insulated back.  
| PRIF (R6 OPTION) insulated back, filter support.



### Lanced Face

With filter support and T-bar mount.  
| LRTF square neck.  
| LRMF round neck.  
| LRIF (R6 OPTION) insulated back.



## Grilles

| GRTA OR GRTS  
| GRTA T-bar aluminum return grille.  
| GRTS T-bar steel return grille.  
| GRTS7, GRTA7 with damper.



## Grilles & Registers

### Aluminum Door Grilles

| GADS, GADA & GADC  
Robust fin construction.



### Spiral Duct Grilles

| GDA  
Vibration-free deflector.  
Architectural design: Fins follow curved face.



### Filter Grilles

| FGSA & FGAA  
Steel or aluminum fins.



### Curved Blade Grilles

| GCB - 1 to 4 deflections  
Adjustable or fixed fins.  
With or without damper.



### Perforated Grilles

| PRE & PRE7  
Economical alternative.  
With or without damper.



### 45° Egg Crate Grilles

| ERE5 & ERE57  
Prevents line of sight inside the grille.



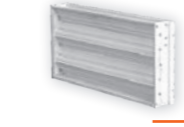
### Standard Commercial Grilles

| GAA1 & GSA1 - Single deflection, adjustable  
| GAA2 & GSA2 - Double deflection, adjustable  
| GAA4 & GSA4 - Lames fixes à 45°  
Aluminum or steel fins.  
Horizontal or vertical face bars.



### Accessories

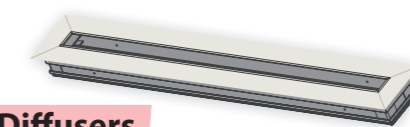
| N7 opposed blade damper.  
| NES equalizing grids (square).



## Architectural Linears

### Linear Slot Diffusers

| ALS diffusers and returns.  
| ALSMC mitered corners for ALS products.  
Aluminum.  
Fully adjustable pattern control and volume damper.  
Exclusive concealed fastening design for quick install.



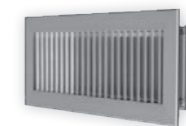
### LineAirFlow Diffusers

| ALF/RFB high-speed linear slot diffuser.  
| -E OPTION surface mount frame.  
| -P OPTION plaster-in frame (tape & spackle).



### Bar Grilles for floor

| REAL & REAL7 (with damper)  
3 way, fixed core.  
Aluminum anodized finish by default.  
Other finishes available.  
Superior 5-way air diffusion.  
Beveled edges allow for smooth foot traffic.



### Bar Grilles for Floor

| RAF & RAF7  
Aluminum, offered with brushed & lacquered finish.  
Removable core and narrow bar spacing.  
Reinforced for floor.



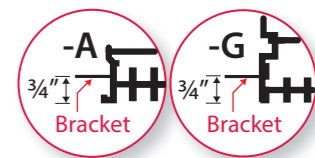
### Sidewall Linear Bar Grilles

| ARCH & ARCH7  
Sturdy bars.  
Removable core.  
Concealed fastening.  
High-end aluminum product.  
Solid and durable.  
No apparent screw holes.

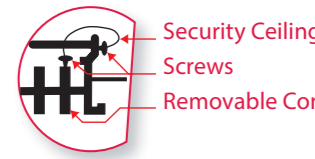


### Linear Bar Grilles for Wall

| ALB  
Linear bar grilles and registers.  
High-end product.  
Flangeless with -SB OPTION.



| -SB OPTION  
Drywall support bracket.



| -CW OPTION  
Security Ceiling Wire.

### Linear Bar Grilles Core Only

| ALBCO  
Extruded aluminum.  
Various bar styles, frames and finishes available.



Distributed by

Airvector® products are manufactured in North America by Alfa Mega Inc. The Airvector® brand has constantly improved since 1987. We are proud to offer a complete line of top-quality products with many exclusive features.

One important objective at Airvector® is to always find new ways to improve our level of service. Serving you well is our priority.



Calalog updates available online at [www.airvector-hvac.com](http://www.airvector-hvac.com)

info@airvector-hvac.com

Toll Free: 1 866 247 8328  
1 866 AIRVECTOR  
Fax: 1 877 439 0628

Airvector  
345 Montee de Liesse  
St-Laurent, QC, H4T 1P5

Rev. 1/EN/2020

## Acoustical Access Panels & PTAC Grilles



**Peripheral Side Swing**  
**PPS** Sleek modern design with sturdy construction.



**Peripheral Up Swing**  
**PPU** Hot Feature: Door lifts off for easy access in restricted space.

**Louvered Up Swing**  
**PLU** Louvered door swings upwards and is removable.

**Invertible Door**  
**PPI** Hot Feature: Door swings either left or right thanks to "lift-off" hinge.

**Aftermarket Projects**  
**PENC** Our development team is ready to assist you in all custom or aftermarket needs.

**Grilles & Casings**  
**PTAC** Color match our casing & discharge grilles with your building's facade for a more aesthetic look on your PTAC projects.



[www.airvector-panels.com](http://www.airvector-panels.com)

## Premium Services



You need a few grilles of that specific dimension nobody would stock... and of course you need it for Yesterday?

No need to wait for weeks and weeks. Benefit from our Premium Services program... We will manufacture the products same day or up to 5 business days after the order date!

## Great Lead Times

Why should it take 5 weeks or more to make an order of diffusers and grilles? Why would you have to plan your materials order 2 months in advance? It just doesn't make any sense to us. This is why our standard lead times are 2-3 weeks. And by that, we really mean 2-3 weeks!

## Truly Dependable

Airvector® customers understand how helpful a good supplier can be. We offer much more than great products. We listen to your needs, we try to understand your questions or issues and always do our best to help you and your business.

We believe this is in our best interest and we feel customers give it back to us a thousand times. Being a helpful and dependable supplier is deeply anchored in our corporate values and we intend to keep it this way forever.

## Time Savers

### Surface Mounting of Diffusers

Save precious installation time with our exclusive plaster frame PF with concealed fastening method. Just clip and tighten, no extra assembly required.



### Architectural Sidewall Grilles

Airvector® ARCH grilles are not just about the look. No other grille on the market is easier to install, remove and clean. It also provides easy duct access for cleaning and maintenance.

### Plaque Diffuser Baffles

Our exclusive NBI baffles for Plaque Diffusers offer better performance, light speed installation and flexibility like no other baffles on the market.

### Removable Cores and Maintenance Cost

Non-removable core diffusers can be very tricky to clean once installed in the ceiling. Too many diffusers have fixed or hardly removable cores. Airvector® diffuser cores are easily removable yet very secure, thanks to our great locking mechanisms. When selecting air distribution products for a project, we believe all costs should be taken into account: products, installation and maintenance cost.

### More Time Savers...

Earthquake tabs and damper access plugs on diffusers, OBD easy clip on grilles and registers, filter returns with integrated round neck... those are just a few other ways for installers to **beat the budget & beat the schedule!**

[www.airvector-hvac.com](http://www.airvector-hvac.com)

## Quality

We have invested a lot of effort into improving our product quality beyond industry standards. We also implemented a strong quality assurance program in order to supply you with a constant flow of top-quality products.



We use powder coated painting on all our products to ensure scratch resistance and the best quality finish.

## Aesthetic

We really go out of our way to make sure all Airvector® products look great once installed in a room. What matters to building owners and architects matters to us.

We pay close attention to every detail, including paint finish, miter quality, lines parallelism and smoothness of the curves.

Grilles, diffusers or linears: we encourage you to compare any Airvector® product side-by-side with any other major brand and see for yourself which one really looks better.

Performance data is available for all Airvector® products.

You can either ask for a catalog or get up-to-date data sheets on our website [airvector-hvac.com](http://airvector-hvac.com)



**BEAT THE BUDGET!**  
**BEAT THE SCHEDULE!**



[www.airvector-hvac.com](http://www.airvector-hvac.com)